

TEMASEK FOUNDATION

INTEGRATED MATERNAL AND CHILD WELLNESS HUB

IN PUNGGOL



An initiative by:



KK Women's and
Children's Hospital
SingHealth



Polyclinics
SingHealth

TEMASEK
FOUNDATION

WHAT IS THIS PROGRAMME ABOUT?

Temasek Foundation Integrated Maternal and Child Wellness Hub in Punggol

The Temasek Foundation Integrated Maternal and Child Wellness Hub is a new programme by KK Women's and Children's Hospital (KKH), SingHealth Polyclinics (SHP), and Temasek Foundation, to support the health and well-being of mothers and young children.

The pilot programme aims to enable early detection of developmental delays and deliver holistic and integrated intervention for mothers and children in the community.

The hub will be located at **SHP - Punggol** and will integrate the screening programme for mothers with their child's visits for vaccinations and developmental screening. Mothers and children will receive:

- Early detection of developmental delays and timely intervention and support
- Enhanced support for breastfeeding and weaning advice
- Postnatal depression screening and timely referral for further support
- Age-appropriate education and support on childhood development and nutrition



WHO CAN JOIN?

From now until **31 December 2021**, eligible participants of the new enhanced screening pilot programme must meet all of the following criteria:

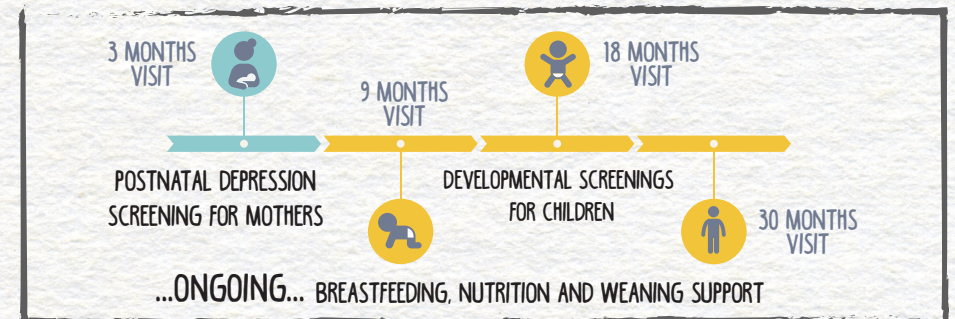
- Mothers who have delivered in the past 3 months (to benefit from the postnatal depression screening)
- Children aged 0-30 months, attending SHP-Punggol for developmental check ups and vaccinations



Only applicable to Singapore Citizens or Permanent Residents.

WHAT IS INCLUDED IN THIS PROGRAMME?

In this programme, the child's vaccination is included in the existing polyclinic visit schedule. During the programme, our nurses will assess how both mother and child are coping and offer support services if needed.



Referrals to KKH will be arranged should further assessments or support be required. Additional information on helping the child develop and grow will be available in age-appropriate sections on our website polyclinic.singhealth.com.sg.

From now until 31 December 2021, there will be no extra cost for Singapore Citizens or Permanent Residents to take part in the enhanced screening pilot programme.

KK Women's and Children's Hospital

100 Bukit Timah Road

Singapore 229899

 6-CALL KKH (6-2255 554)

 6293 7933

 www.kkh.com.sg

 www.facebook.com/kkh.sg

SingHealth Polyclinics

167 Jalan Bukit Merah

Tower 5, #15-10

Singapore 150167

 +65 6643 6969

 polyclinic.singhealth.com.sg

Please note that the programme may be subject to change.